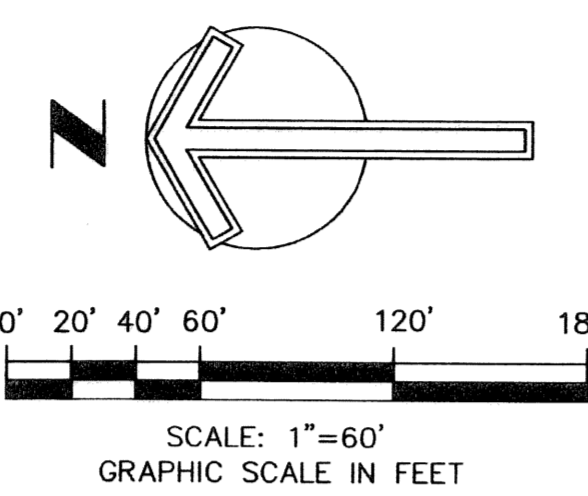


SOUTH ROAD / 441

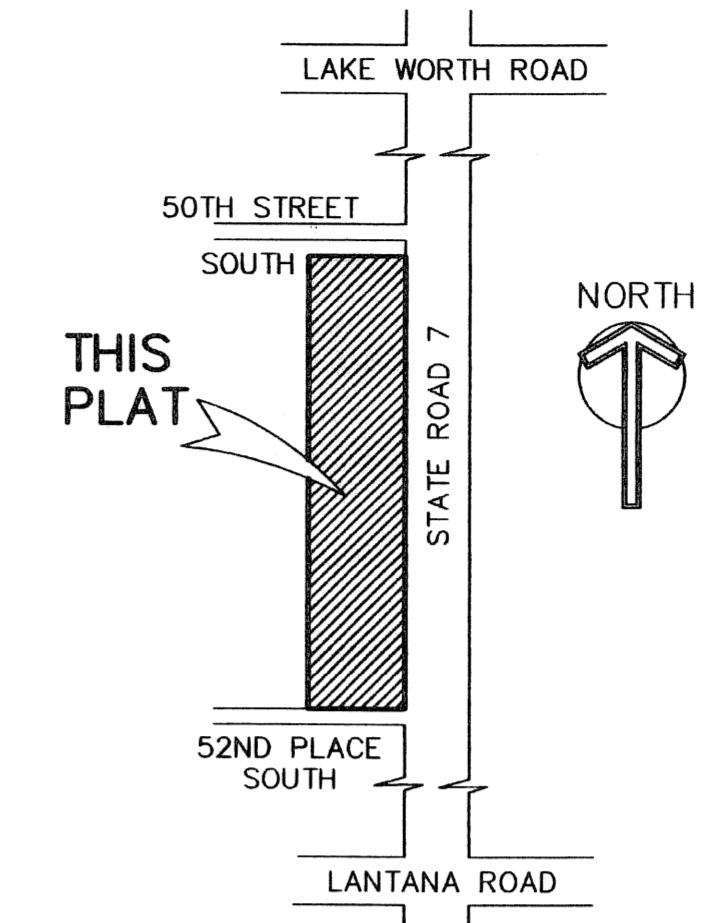
ABBREVIATIONS:

- PCP PERMANENT CONTROL POINT
- O.R.B. OFFICIAL RECORDS BOOK
- P.B. PLAT BOOK
- PG. PAGE
- P.B.C.R. PALM BEACH COUNTY RECORDS
- L.W.D.D. LAKE WORTH DRAINAGE DISTRICT
- SQ. FT. SQUARE FEET
- R/W RIGHT-OF-WAY
- ELEV. ELEVATION
- SEC. SECTION
- TWP. TOWNSHIP
- RGE. RANGE
- U.E. UTILITY EASEMENT
- ☉ CENTERLINE
- ☐ SET P.R.M.(PERMANENT REFERENCE MONUMENT #4103 (UNLESS NOTED OTHERWISE))
- L.B.E. LANDSCAPE BUFFER EASEMENT
- L.A.E. LIMITED ACCESS EASEMENT



**A REPLAT OF A PORTION OF TRACTS 1 & 8, BLOCK 35
PALM BEACH FARMS COMPANY PLAT NO. 3 (P.B. 2, PGS. 45-54, P.B.C.R.)
SECTION 36, TOWNSHIP 44 SOUTH, RANGE 41 EAST
PALM BEACH COUNTY, FLORIDA**

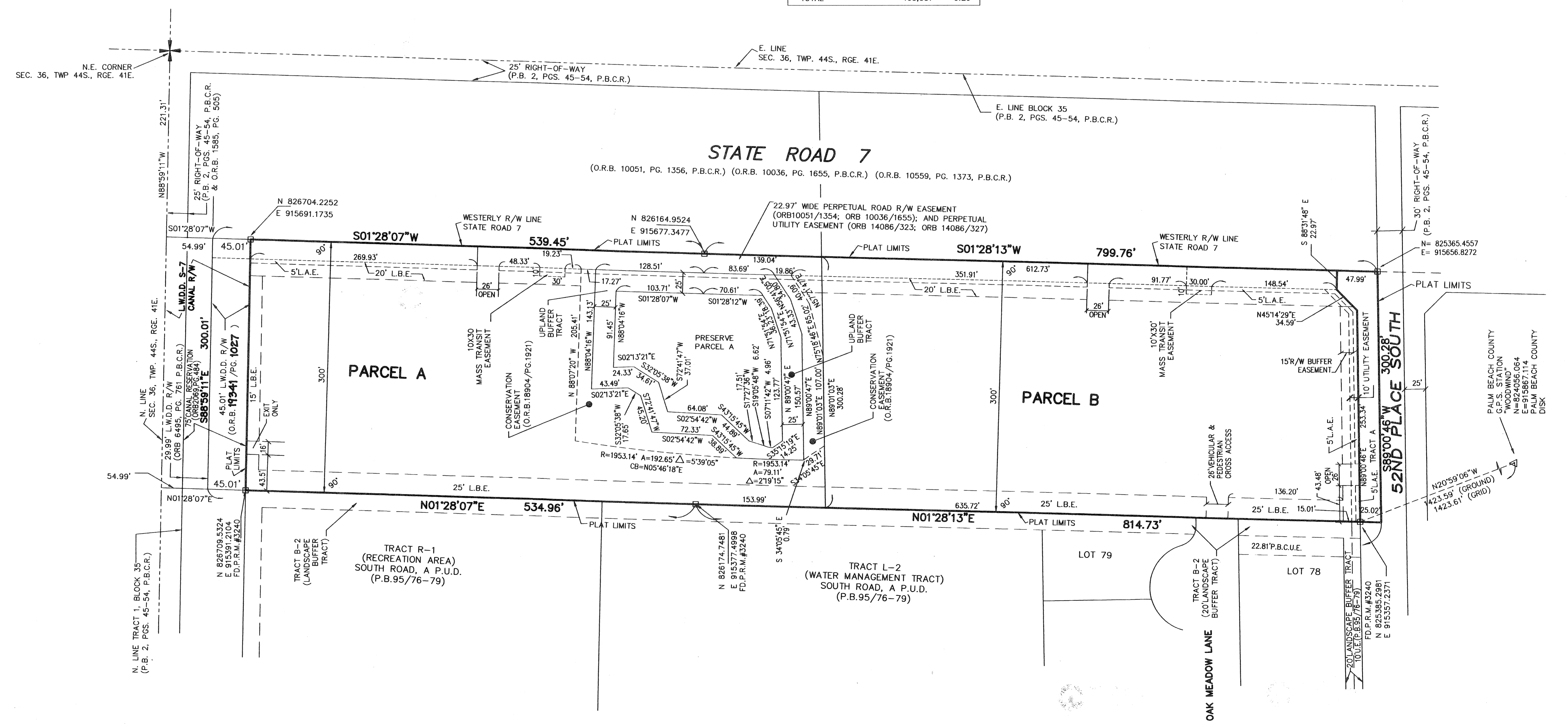
PREPARED BY:
KATHLEEN L. HALL LAND SURVEYING, INC.
5499 NORTH FEDERAL HIGHWAY, SUITE N
BOCA RATON, FL. 33487
TEL.(561)443-0426 FAX.(561)443-0429
L.B. #6555
APRIL, 2002



LOCATION MAP
NOT TO SCALE

COUNTY OF PALM BEACH
STATE OF FLORIDA
THIS PLAT WAS FILED FOR
RECORD AT _____
THIS _____ DAY OF _____
2005, AND DULY RECORDED
IN PLAT BOOK _____, PAGES
_____ AND _____
SHARON R. BOCK
Clerk & Comptroller
BY: _____

AREA TABULATION	SQ. FT.	ACRES
PARCEL A	158,767	3.65
PARCEL B	189,888	4.36
TRACT A	8,332	0.19
UPLAND BUFFER TRACT	19,279	0.44
PRESERVE PARCEL A	27,071	0.62
TOTAL	403,337	9.26



SUBDIVISION South Road / 441
BOOK 10B
FLOOD ZONE
QUAD # 63
SE
TAZ 1021
FED. NAME